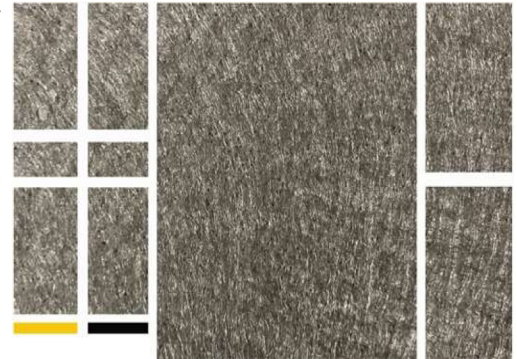


# NON-WOVEN GEOTEXTILE

## GC - 140



SKAPS GC-140 is a needle-punched nonwoven geotextile made of 100% virgin polypropylene staple fibers, which are formed into a random network for dimensional stability. SKAPS GC-140 resists ultraviolet deterioration, rotting, biological degradation, naturally encountered alkalis and acids. Polypropylene is stable within the pH range of 2 to 13. SKAPS GC-140 is NTPEP certified and meets requirements as per AASHTO Standards and/or D.O.T. Standards.



SKAPS GC-140 conforms to the Minimum Average Roll Values (MARV) listed below:

Property	Method	English (MARV <sup>2</sup> )	Metric (MARV <sup>2</sup> )
Mass Per Unit Area	ASTM D-5261	4.1 oz/yd <sup>2</sup>	139 g/m <sup>2</sup>
Grab Tensile Strength	ASTM D-4632	102 lbs	0.453 kN
Grab Elongation	ASTM D-4632	50%	50%
Trapezoid Tear Strength	ASTM D-4533	45 lbs	0.200 kN
CBR Puncture Resistance	ASTM D-6241	300 lbs	1.33 kN
UV Resistance	ASTM D-4355	70%/500 hrs.	70%/500 hrs.
Asphalt Retention	-	0.24 gal/yd <sup>2</sup>	1.1 l/m <sup>2</sup>
Melting Point	-	300 °F	150 °C

### Packaging

Roll Dimensions (W x L)	6.25 x 360 ft.	1.90 m x 109.8 m
	12.5 x 360 ft.	3.81 m x 109.8 m
	15 x 360 ft.	3.60 m x 109.8 m
Area Per Roll	250 sq. yards	210.22 sq. meters
	500 sq. yards	418.3 sq. meters
	600 sq. yards	505.3 sq. meters

### Note

1. The property values listed above are subject to change without notice.
2. Minimum Average Roll Values (MARV) is calculated as the average minus two standard deviations. Statistically, it yields approximately 97.5% degree of confidence that any samples taken from quality assurance testing will meet or exceed the values described above.

*This information is provided for reference purposes only and is not intended as a warranty or guarantee. SKAPS assumes no liability in connection with the use of this information.*